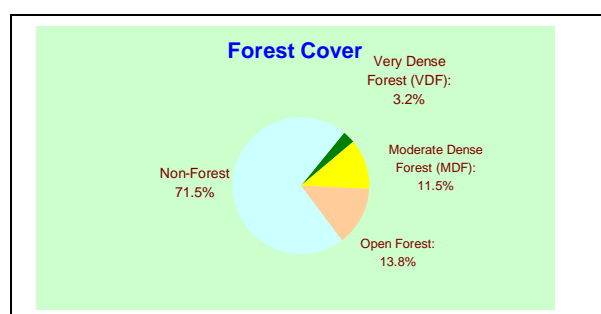


7.12. JHARKHAND

Geographic Area	79,714 km ² (2.4% of country)
Population	26.91 million (2.6% of country)
Urban	5.99 million (22.2%)
Rural	20.92 million (77.8%)
Average Population Density	338 persons per km ²
Tribal Population	22.50%
Livestock Population	NA
No. of Districts	18
No. of Hill Districts	0
No. of Tribal Districts	8

Recorded Forest Area	
Reserved Forest (RF):	4,387 km ²
Protected Forest (PF):	19,185 km ²
Unclassed Forest (UF):	33 km ²
Total:	23,605 km²
Of State's Geographic Area	29.61%
<i>Of Country's Forest Area</i>	<i>3.05%</i>

Forest Cover	
Very Dense Forest (VDF):	2,544 km ²
Moderate Dense Forest (MDF):	9,137 km ²
Open Forest:	11,035 km ²
Total:	22,716 km²
Of State's Geographic Area:	28.5%
Of Country's Forest Cover:	0.69%



Tree Cover	
Culturable Non-Forest Area (CNFA):	51,555 km ²
No. of trees per ha of CNFA:	10.4
Tree Cover:	5,012 km ²
<i>Of State's Geographic Area:</i>	<i>6.29%</i>
<i>Of CNFA:</i>	<i>9.72%</i>

Forest & Tree Cover	
Total Forest & Tree Cover:	27,728 km ²
<i>Of State's Geographic Area:</i>	<i>34.78%</i>
<i>Of Country's Forest & Tree Cover</i>	<i>3.56%</i>
Per capita Forest & Tree Cover:	0.10 ha

FOREST COVER MAP OF JHARKHAD

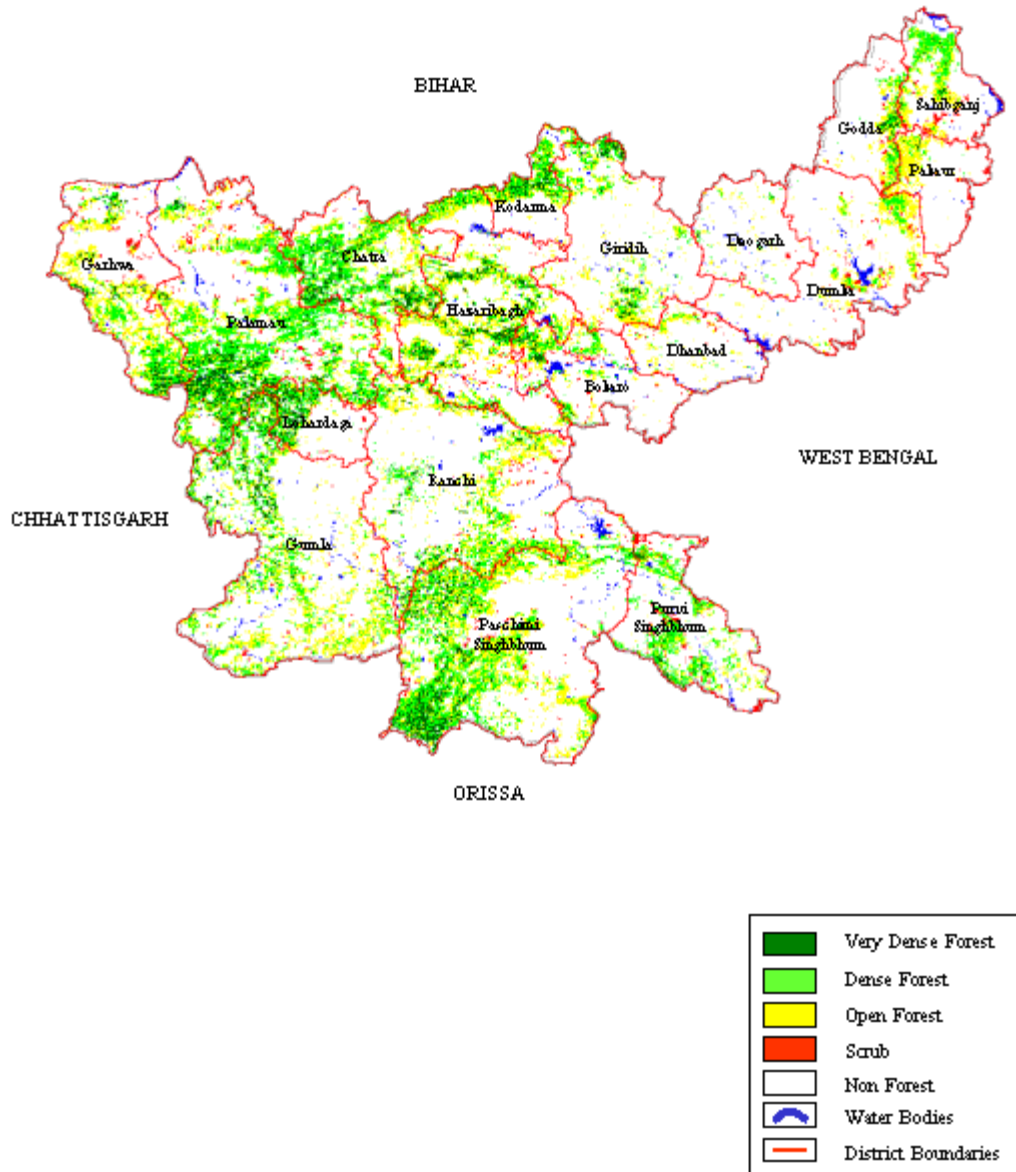


Fig. 7.12

Table 7.12a: District-wise Forest Cover (Jharkhand)

Number of Districts: 18

(Area in km²)

District	Geographic Area	Forest Cover				Percent	Change
		Very Dense	Moderate Dense	Open Forest	Total Forest		
Bokaro	1,929	59	223	299	581	30.12	7
Chatra	3,732	251	842	695	1,788	47.91	-107
Deoghar ^T	2,479	3	24	75	102	4.11	14
Dhanbad	2,996	0	45	163	208	6.94	34
Dumka	6,212	0	120	376	496	7.98	8
Garhwa	4,092	147	460	827	1,434	35.04	59
Giridih	4,963	99	302	419	820	16.52	37
Godda	2,110	35	144	296	475	22.51	85
Gumla ^T	9,077	258	903	1,402	2,563	28.24	77
Hazaribagh	5,998	284	627	1,177	2,088	34.81	-74
Kodarma	1,435	94	291	222	607	42.30	-9
Lohardaga ^T	1,491	149	232	135	516	34.61	-41
Pakaur ^T	1,571	8	35	239	282	17.95	-12
Palamu ^T	8,657	492	1,808	1,261	3,561	41.13	-299
Paschimi Singhbhum ^T	9,907	446	1,598	1,767	3,811	38.47	84
Purbi Singhbhum ^T	3,533	49	528	346	923	26.13	38
Ranchi ^T	7,698	148	687	1,040	1,875	24.36	143
Sahibganj	1,834	22	268	296	586	31.95	35
Total	79,714	2,544	9,137	11,035	22,716	28.50	79

Table 7.12b : Forest cover change matrix of Jharkhand

2001 Assessment	2003 Assessment				Total 2001
	Dense forest	Open forest	Scrub	Non-forest	
Dense forest	9396	1765	8	618	11787
Open forest	1990	8518	10	332	10850
Scrub	26	83	749	118	976
Non-forest	269	669	40	55123	56101
Total 2003	11681	11035	807	56191	79714
Net change	-106	185	-169	90	